

# Marlin Laboratory Manufacturing



## Water Purification

Marlin Labs established in 1995 is a leading supplier of water purification technology to medical and Industrial customers in South Africa and the African continent. We produce leading edge solutions for our customer's water purification needs. As an ISO certified company we pride ourselves in offering our customers comprehensive support, turnkey solutions and reliable project management. We have installations extensively throughout South Africa and the African continent.



# Potable Water

Marlin Labs offers potable water solutions to suit our customer's needs. We provide customized solutions as well as standard options.



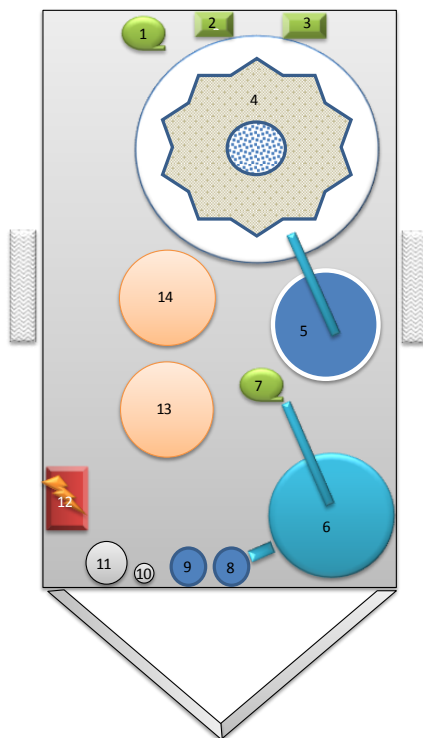
River water from this.....

To this

Our potable systems are constructed in modular form to provide drinking water from Rivers, Dams, Streams, Wells and Boreholes. Our product water may be preserved for consumption for up to 2 years.

## Options

Trailer mounted system providing up to 1000 l per hour

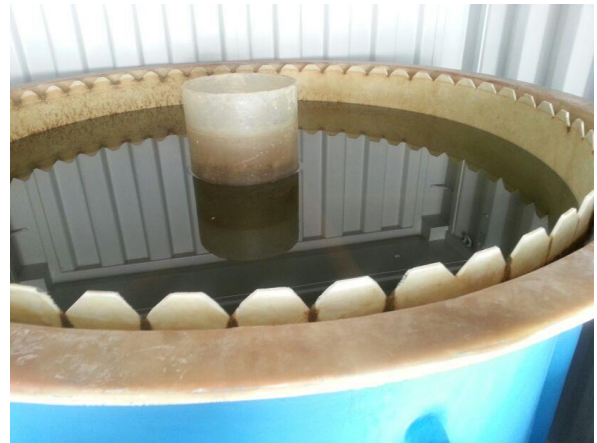


- 1 River/dam water supply pump
- 2 Flocculant dosing pump
- 3 Soda Ash Dosing pump
- 4 Separator Tank
- 5 Water collection/break tank
- 6 Sand Filter
- 7 Booster pump
- 8 1 Micron 20" filter
- 9 0.2 Micron Filter
- 10 Ultra violet Light
- 11 Ultra Filter
- 12 Buffer Tank with Ozone
- 13 Soda Ash Storage Tank
- 14 Flocculant storage Tank

### Trailer Mount Features include

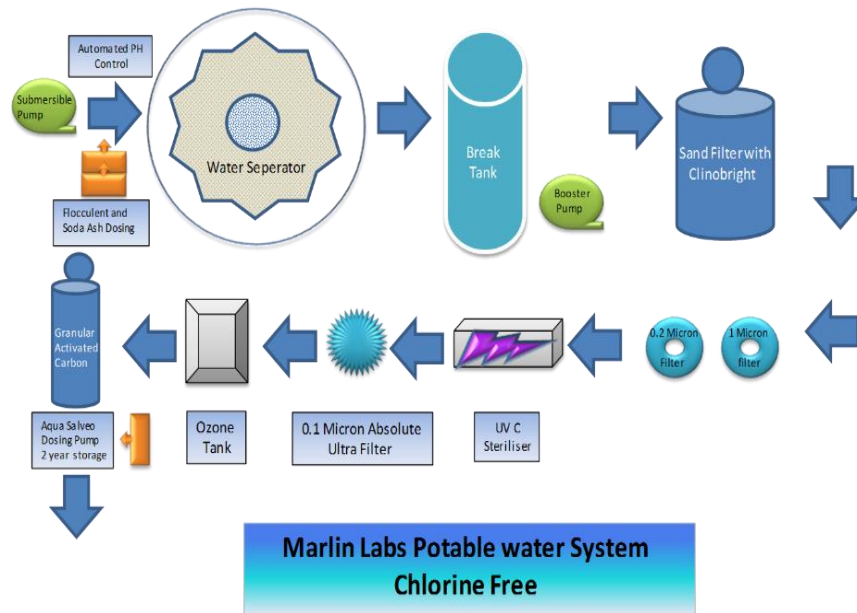
- Automated clarifier dump
- Automated Sand filter flush
- Automated Ultra filter flush
- Inline PH control and measurement
- Automated pump control for speed and pressure
- 2g per hour ozone generator
- Clean water back flush system on Ultra filter
- Water preservative dosing
- Dry weight approximately 600Kg
- Operational weight approximately 1800Kg
- Power Requirements 220 V single phase 2100W

# Containerised Potable Water Plants



## Modular Design

- 4000 LPH
- 10 000 LPH
- 15 000 LPH
- 20 000 LPH
- 25 000 LPH



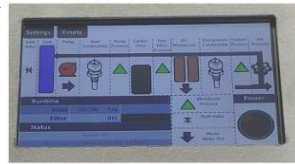
Our products function without the use of chlorine and our product water is preserved for up to 24 months. Chlorine sanitization is an option.



# Reverse Osmosis

We build Reverse Osmosis systems to fit every need. Our extensive experience and National footprint in the Renal industry have made us the company of choice for many Dialysis Service Providers. Our products include.....

## Portable Ro Systems



Digital Touch Screen

- 90 LPH Series 3
- 120 LPH Series 3



- 90 LPD Series 2
- 120 LPH Series 2

## Mobile RO systems



Mobile RO with pre-treatment up to 600 LPH

## RO Plants



Static RO plant rooms from 300 LPH to volumes as required

## De-Salination

Marlin Labs produces a range of De-Salination plants specific to our customer's needs. Our plants are built to our customer's specifications.

Technical details are available on request.

## Service and Support

Our technical staff are located throughout South Africa and we offer technical support countrywide and in the African Continent.

Marlin Labs offices are located in Durban, Pretoria, Welkom, Cape Town, Port Elisabeth and East London. We offer real time technical support monitoring and work progress.

Our systems are built to have redundancy and our rapid response to site ensures minimal downtime on critical supply installations.

## Contact Us

Unit 3,5&6  
23 Beechgate Crescent  
Southgate Industrial Park  
Amanzimtoti  
KZN  
South Africa  
Phone: +27 31 914 2232  
[mark@marlinlabs.co.za](mailto:mark@marlinlabs.co.za)

